

WINGS PARENT ORIENTATION

**DESCRIPTION OF GIFTED PROGRAMS
CHARACTERISTICS OF GIFTED
ADDITIONAL INFORMATION**

PHELPS ADMINISTRATORS

Dr. Lenae Lazzelle

Director of Gifted Education

llazzelle@spsmail.org

1st Point of
Contact

Mrs. Megan Mann

WINGS Coordinator

mmann@spsmail.org

SPS GIFTED PROGRAMS MISSION & VISION

Our mission is to ensure challenging curriculum meets the exceptional needs of gifted learners.

Our vision is to be the statewide leader in Gifted Education by continuously demonstrating high levels of learning.

WHAT EXACTLY IS WINGS?

Working with the Individual Needs of Gifted Students

We provide the following programs & services:

WINGS program

SCHOLARS program

Missouri Scholars Academy (MSA)

YOUR FIRST DAY OF WINGS

Monday students August 29

Tuesday students August 30

Wednesday students August 31

Thursday students September 1

Phelps Center for Gifted Education

WINGS DAY SCHEDULE 2022-23

Springfield Public Schools

Monday	Tuesday	Wednesday	Thursday	Friday
Bissett	Bingham	Boyd	Cherokee	Collaborative Team Planning
Cowden	Bowerman	Fremont	Delaware	
Holland	Carver	Gray	Field	
Jarrett	Disney	Harrison	McBride	
Jeffries	Hickory Hills	Reed	McGregor	
Mann	Pershing	Sequiota	Pleasant View	
Pipkin	Robberson	Watkins	Rountree	
Pittman	Sherwood	Weaver	Sunshine	
Wilder	Twain	Weller	Truman	
York	Westport	Wilson's Creek	Williams	
★ ALL Non-Public				

WINGS Day Schedule is subject to change based on summer testing and enrollment. Those affected will be notified as soon as possible.

WHAT DOES A WINGS DAY LOOK LIKE?

Thinking Skills

Cognitive Competencies

Affective Education

Intra/Interpersonal Competencies

Major Units of Study

Students Choice/Interest

WINGS SCHEDULE

7:30-7:55

Doors Open & Breakfast

7:55-8:00

Attendance

8:00-12:00 (including lunch)

Affective Education & Thinking Skills

12:00-2:30

Major Unit

2:30

5th-8th Grade Dismissal

2:45

1st-4th Grade Dismissal

10:30-11:00

3rd-5th Grade Lunch

11:00-11:30

6th-8th Grade Lunch

11:15-11:45

1st -2nd Grade Lunch

MAJOR UNIT OF STUDY



Examples of Major Unit Choices:

Shelters & Structures, Mind Storms, Satellites to Doorsteps, From Page to Stage, Shakespeare in the Park, Chemistry Matters, School of Rock, Loop it!, Science of Harry Potter, Math Mayhem, Print Making, and new units every year.

COGNITIVE THINKING SKILLS

Problem Solving

Creative Thinking

Critical Thinking

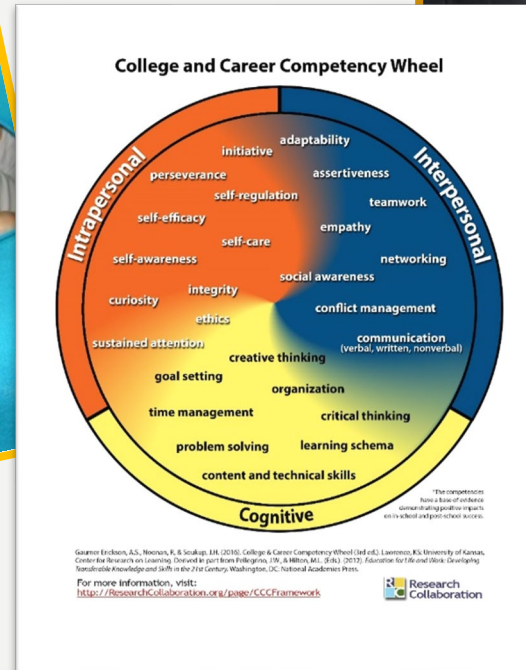
Learning Schema

Content/Technical Skills

Organization/Time Management



AFFECTIVE EDUCATION



Refers to all the personal, social, and emotional aspects of learning.

CHARACTERISTICS OF GIFTED CHILDREN

- Early language proficiency
- Early development of reading ability
- Advance sense of humor
- Longer attention span
- Ability to retain and store information
- Extreme sense of justice
- Worrier
- Asynchronous development
- Perfectionism

BRIGHT STUDENTS GIFTED STUDENTS

Bright Student

6-8 repetitions mastery

Knows the answer

Has good ideas

Learns with ease

Enjoys peers

Is receptive

Enjoys school

Good memorizer

Pleased with own learning

Gifted student

1-2 repetitions mastery

Asks the questions

Wild, silly ideas

Already knows

Prefers adults

Is intense

Enjoys learning

Good guesser

Highly self-critical

BELL CURVE

I.Q. <70

Special
Education

Average I.Q. 100

Schools are made
for these kids

I.Q. > 125

Gifted
Education

FAMILY FACTS

- Siblings are usually less than ten IQ points apart.
- Parents are usually within ten points of their child's IQ.
- Parents are excellent identifiers of giftedness in their children.

NEEDS OF GIFTED STUDENTS

- Discussions with intellectual peers.
- Challenging group and individual work which demonstrates process skills.
- Courses in areas of strength and interest which accelerate pace and depth of content.
- Exposure to new areas of learning within and outside the school structure.
- Opportunities to apply abilities to real problems.

Policy Regarding WINGS Day Work

Principals are asked to review the following guidelines with their staff at the beginning of each school year

The WINGS student **should not be held accountable** for standard classroom assignments, such as review, practice exercises, daily work and other related activities missed on the day of participation in the gifted program. Students **are accountable** for the concepts, process skills and intellectual content as measured on end-of-unit tests, projects or other assessments included in the curriculum presented by the home school teacher.

The home school **shall avoid** scheduling major tests, assignment due dates for major projects, field trips, honor programs, etc. on the day students attend the gifted program. Students attending WINGS should be considered fully enrolled and not be penalized for grades dependent on class participation, attendance, and daily assignments that occur on their day of attendance. Home school teachers are encouraged to communicate their strategy for addressing these practices and procedures with participating students/parents at the beginning of the school year.

NON-PUBLIC SCHOOLS

- Students who attend WINGS must live in the SPS District.
- Students must register each year at their qualifying home school.
- Students may not attend WINGS without first being registered at their attendance area home school.

BREAKFAST & LUNCH ACCOUNTS

- SPS students may pay at their home school/online.
- All food service accounts are connected together.
- Private/parochial/home school may also deposit money into their SPS account.
- Students may bring their lunch.
- Healthy snacks may be brought from home.
- Breakfast/lunch menus may be found SPS.org.

MEDICATIONS

Medication may only be dispensed with written permission from a parent or guardian and a complete description of the medication to be given.

Medication must be brought in the original container and left with the school nurse on the student's first day.

ATTENDANCE

All absences should be reported to the Phelps office 523-3300.

Absences, tardiness, and early departures are reported to the home school.

Phelps has a sequential curriculum to ensure a meaningful, significant, and engaging school day.

Attendance is critical.

ARRIVAL AND RELEASE TIMES

WINGS starts at 7:55am

Students arriving between 7:30 and 7:55am should go directly to the cafeteria through door 10.

Breakfast is served between 7:30 - 7:55am.

Late arrivals (8:10) will check in at the office.

WINGS releases at:

2:30 Grades 5-8 (pink tag)

2:45 Grade 1-4 (yellow tag)

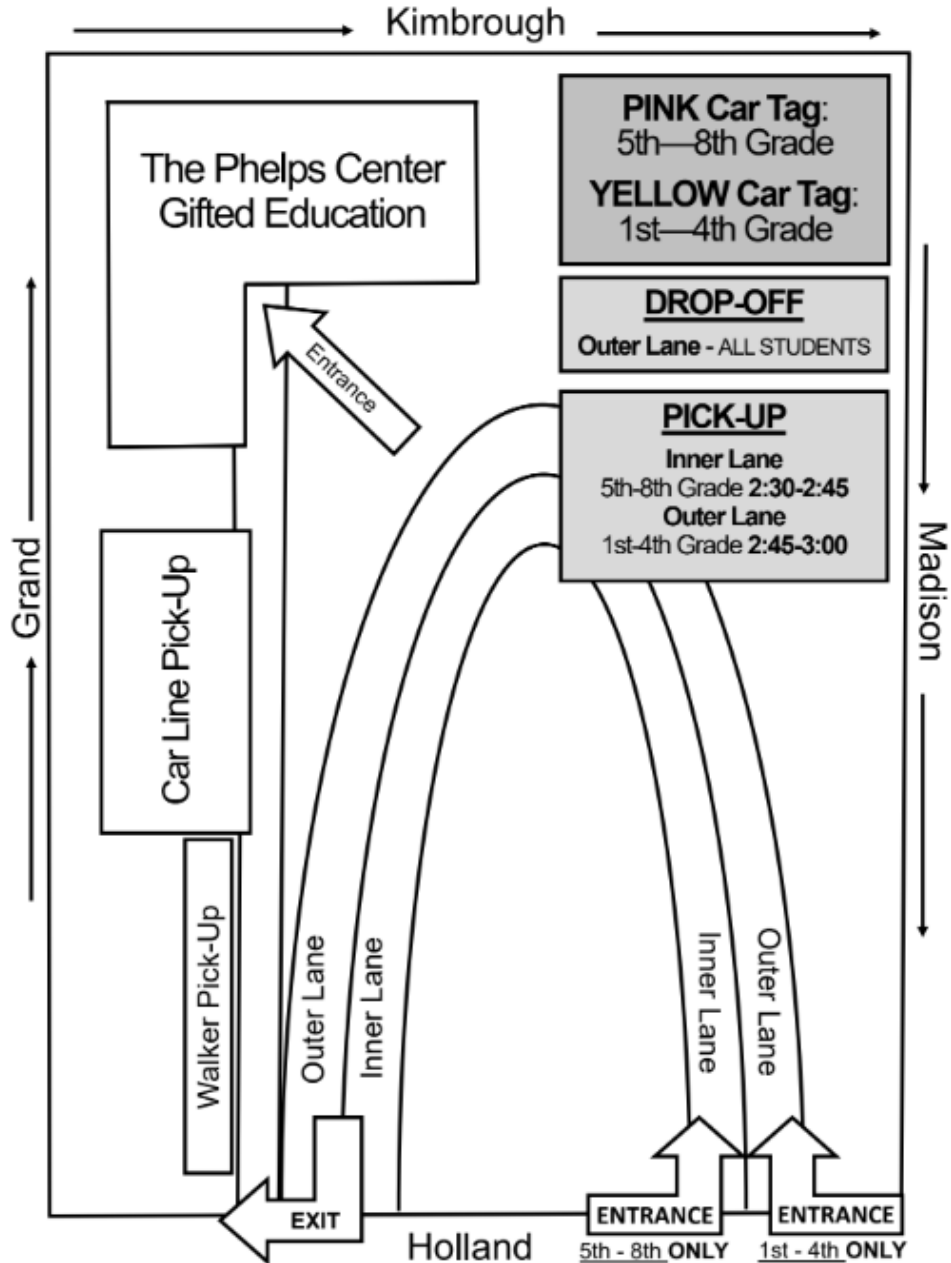
YMCA-Before/After School Care

TRANSPORTATION

- Transportation is the responsibility of the parents and/or guardians.
- Please follow the directions on the map to make drop off and pick-up move as smoothly as possible.
- Student pick-up tags must be clearly written displayed until your child is placed in the car.
- 2 tags are provided and written on. If you need more, please head to the office after the meeting.
- Any person picking up a student must have a tag.

NO EXCEPTIONS

DROP - OFF & PICK - UP INSTRUCTIONS



(NOT TO SCALE)

WINGS WEBPAGE

SPS.ORG/PHELPS

Please check the website for all important program information:

Calendar of Events

Class Syllabus

Resources

The Latest News

Library Media Center link

Green Team & Chess Club

PAGE